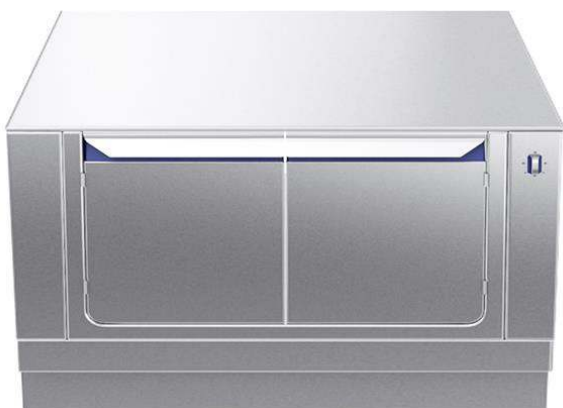


**Modular Cooking Range Line**  
**thermaline 80 - 1000mm Passth. Electric**  
**Warming Cabinet, 4 doors, GN conform,**  
**2 Sides(H2)-H=550**

ITEM # \_\_\_\_\_  
 MODEL # \_\_\_\_\_  
 NAME # \_\_\_\_\_  
 SIS # \_\_\_\_\_  
 AIA # \_\_\_\_\_



**588320 (MA4KDCJOAO)**

Passthrough electric  
 Warming Cabinet, with 4  
 doors, two-side operated,  
 GN - H2

### Short Form Specification

**Item No.** \_\_\_\_\_

1000 mm wide passthrough warming cabinet with 4 doors. Internal frame for heavy duty sturdiness in stainless steel. Flat surface construction, easily cleanable. Temperature in the cabinet can be set through thermostat, up to a maximum of 110 ° C. Cabinet storage space accepts GN 1/1 containers. IPX5 water resistant certification. Configuration: Two-side operated freestanding base, hygienic class H2.

### Main Features

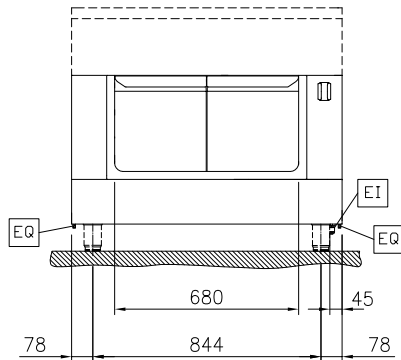
- All major components may be easily accessed from the front.
- THERMODUL connection system creates a seamless work top when units are connected to each other thus avoiding soil penetrating vital components and facilitating the removal of units in case of replacement or service.
- Unit constructed according to DIN 18860\_2 with 70 mm recessed plinth.
- Temperature in the cupboard can be set through a thermostat to suit different requirements. The maximum temperature is 110°C.
- Unit can be installed below modular top appliances, designed to keep plates warm.

### Construction

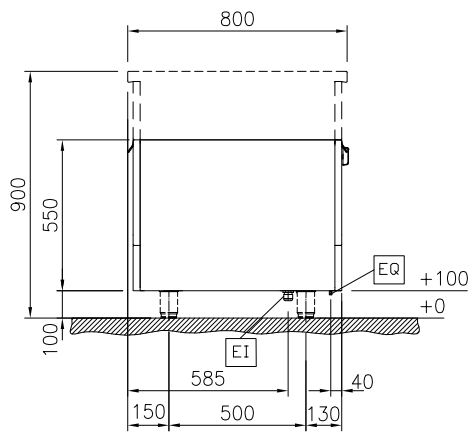
- IPX5 water resistance certification.
- 2 mm top in 1.4301 (AISI 304).
- Flat surface construction with minimal hidden areas to easily clean all surfaces
- Storage space in the base of the appliance accepts GN1/1 containers.
- Internal frame for heavy duty sturdiness in stainless steel.

**APPROVAL:** \_\_\_\_\_

Front

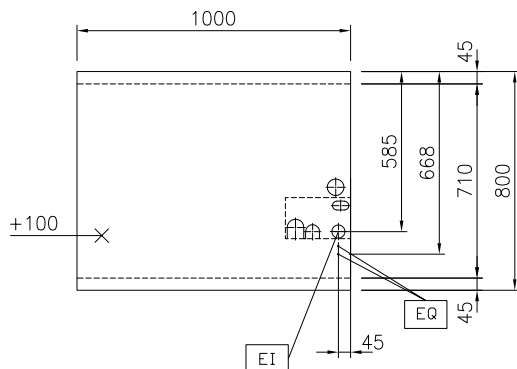


Side



EI = Electrical inlet (power)

Top



### Key Information:

|                                      |           |
|--------------------------------------|-----------|
| External dimensions, Width:          |           |
| 588320 (MA4KDCJOAO)                  | 1000 mm   |
| External dimensions, Depth:          | 800 mm    |
| External dimensions, Height:         | 550 mm    |
| Cupboard Cavity Dimensions (width):  | 680 mm    |
| Cupboard Cavity Dimensions (height): | 330 mm    |
| Cupboard Cavity Dimensions (depth):  | 710 mm    |
| Cabinet temperature range:           | 30-110 °C |
| Net weight:                          | 36 kg     |

### Sustainability

|                      |        |
|----------------------|--------|
| Current consumption: | 5 Amps |
|----------------------|--------|

## Optional Accessories

- Stainless steel side panel, 800x800mm, freestanding PNC 912508 ☐
- Stainless steel front kicking strip, 1000mm width PNC 912600 ☐
- Stainless steel side kicking strips left and right, freestanding, 800mm width PNC 912619 ☐
- Stainless steel plinth, freestanding, 1000mm width PNC 912827 ☐
- Perforated shelf for warming cabinets and cupboard bases (one-side operated TL80-85-90 and two-side operated for TL80) PNC 913235 ☐
- Energy optimizer kit 14A - factory fitted PNC 913244 ☐
- Side reinforced panel only in combination with side shelf, for freestanding units PNC 913257 ☐
- Shelf fixation for TL80-85-90 one-side operated, TL80 two-side operated PNC 913283 ☐
- Stainless steel dividing panel, 800x800mm, (it should only be used between Electrolux Professional thermaline Modular 80 and thermaline C80) PNC 913669 ☐
- Electric mains switch 25A 4mm<sup>2</sup> NM for modular H800 electric units (factory fitted) PNC 913676 ☐
- Stainless steel side panel, 800x800mm, flush-fitting (it should only be used against the wall, against a niche and in between Electrolux Professional thermaline and ProThermetic appliances and external appliances - provided that these have at least the same dimensions) PNC 913685 ☐